



Setting Styles



While you should lock down the shape of the center diamond first, the setting is what really dictates the overall look and feel of your engagement ring.

Setting Considerations:

Metal color:

Metal color is an element of the ring that the ring-wearer usually has a strong opinion about. This decision comes down to personal preference.

Metal Color Mini Guide

Yellow Gold: 14k gold is a little harder and more durable. 18k has slightly deeper and richer yellow color.

White Gold: 14k and 18k appear quite similar. White gold is an alloy of yellow gold and will yellow with wear so it requires more maintenance over time.

Rose Gold: 18k gold is quite pink so 14k is more common.

Platinum: Inherently white metal that will not yellow over time. Shows scratches and dings more easily than white gold.



Jeweler's Tip: *If you are setting your diamond on a yellow gold band, consider going with platinum or white gold prongs for diamonds graded in the colorless and near-colorless range. Sometimes the yellow of the metal can reflect into the diamond, making it appear less white and bright.*

Sizability:

Some setting styles are easy and inexpensive to size up or down, while some styles are more difficult or cannot be resized at all.



Jeweler's Tip: *Generally, bands with diamonds all around (aka eternity bands) cannot be resized. You can ask for the band to be "three-quarters or half eternity," which will save a few dollars and allow for the band to be resized.*

Stackability & Pairing:

Consider how you'll ultimately be pairing the engagement ring with a wedding band. Do you plan to wear your engagement ring every day? Is it important that the wedding band be able to sit flush against your engagement ring? Do you plan on stacking multiple bands together? Do you want to incorporate a colored gemstone in your stack? You don't need all the answers, but it's worthwhile to consider these factors!

Lifestyle:

Some setting styles are more durable than others. For example, prong-set rings tend to be more delicate, while a bezel setting stands up to more intense wear.



Band Width:

In recent years, ultra-thin bands have become more popular. If going for a delicate look, ask the jeweler to make the band as thin as practically possible. It depends on your finger size and the size of the diamond, but generally 1.7mm – 2mm is a great width for many people.

Prongs:

Prongs are an art all unto themselves, so check out different styles on Instagram and Pinterest. Make sure to provide your jeweler with examples of rings with prongs you like.



Setting Styles:

The setting is a great way to express your personal style. Once you've selected your favorite diamond shape, you can research setting styles for that shape.

Here are the most classic and/or popular setting styles.



Solitaire:

The solitaire setting features a single center stone, which allows the diamond to be the focal point.



Halo:

The halo setting features a center diamond or gemstone surrounded by a ring of smaller diamonds or gemstones. This style can make the center stone appear larger and more brilliant.

**Pavé:**

The pave setting features small diamonds or gemstones set closely together on the band, creating a “paved” look. This style adds sparkle and can complement the center stone.

**Three-Stone:**

The three-stone setting features a center diamond or gemstone flanked by two diamonds or gemstones. This symbolizes the past, present, and future. Side stones are a great way to add personality and overall appearance of size to your ring.

**Bezel:**

The bezel setting features a center diamond or gemstone set within a metal rim. This style can create a modern and sleek look, while also protecting the diamond or gemstone.



Gypsy or burnished:

The gypsy setting is a type of flush setting in which the diamond or gemstone is set into the band so it's level with the surface of the metal. The metal is then burnished or hammered around the edges to hold the stone securely in place. This setting type is very secure and is a great option for those going for a less traditional look.



Cluster:

The cluster setting is a style that features multiple small diamonds or gemstones set closely together to create the appearance of one larger shape. This style can be a great way to maximize sparkle and create a unique look.



East-West:

The East-West setting features a center diamond or gemstone set horizontally. This style can create a more modern look while still keeping it simple.



Moi et toi:

The Moi et Toi setting highlights two stones of equal or comparable size set side by side to represent the union of two equals. This style has gained popularity in recent years and always makes a statement.

Side Stones:

Choosing side stones is a great way to add a unique touch to your ring and maximize the sparkle for your investment. Side stones greatly influence the overall vibe and style of the ring.

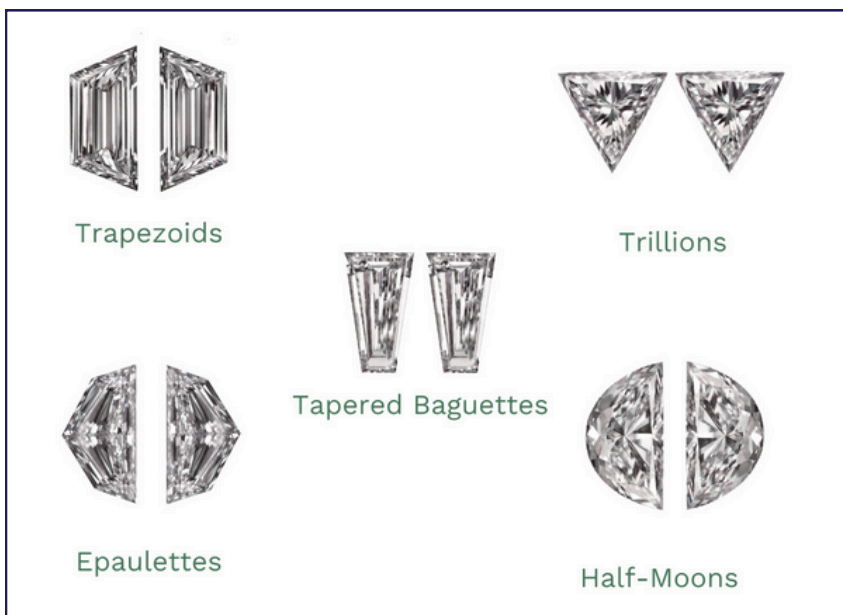
Colored Gemstones: Using colored gemstones like green emeralds or blue sapphires for your side stones can add a unique personal touch. Make sure you discuss using colored stones, the ring-wearer usually has a strong opinion here.

Diamond Sidestones: Choose diamond side stones with a similar color grade to the center diamond. A mismatch in diamond color can accentuate the more yellow tones of the lower color-graded diamond(s).

Proportions: The name of the game is proportions. Some people like smaller side stones to draw the eye to the center stone. Others prefer larger side stones to maximize carat weight and finger coverage.



Faceting patterns: Some people find it valuable to match the faceting pattern of the side stones with the center stone. By this, we mean choosing step-cut side stones for a step-cut center diamond and choosing brilliant-cut side stones for a brilliant-cut center diamond. See the “Terms to Know” guide for more info on step cuts versus brilliant cuts.



As with everything in this guide, instead of worrying about what shapes “should” go with your center stone, focus on what you like!

Above are a few types of popular side stones. Schedule your free 1 on 1 advice session with an engagement ring expert on the last page of this document to learn more about the art of side stones!